



reliable, durable, customizable, affordable

[broadcast antenna systems]

MODEL **PSILVDP**

VHF LOW BAND DUAL DIPOLE PANEL ANTENNA FOR SQUARE MOUNTING CONFIGURATION

Electrical Specifications

Frequency: 54 - 88 MHz

Gain: 5.62 (7.5 dBd) (single dual panel configuration)

VSWR: < 1.15:1 (on channel)

Impedance: 50 ohms

Polarization: Horizontal

HPBW: E-Plane 66°

H-Plane 56°

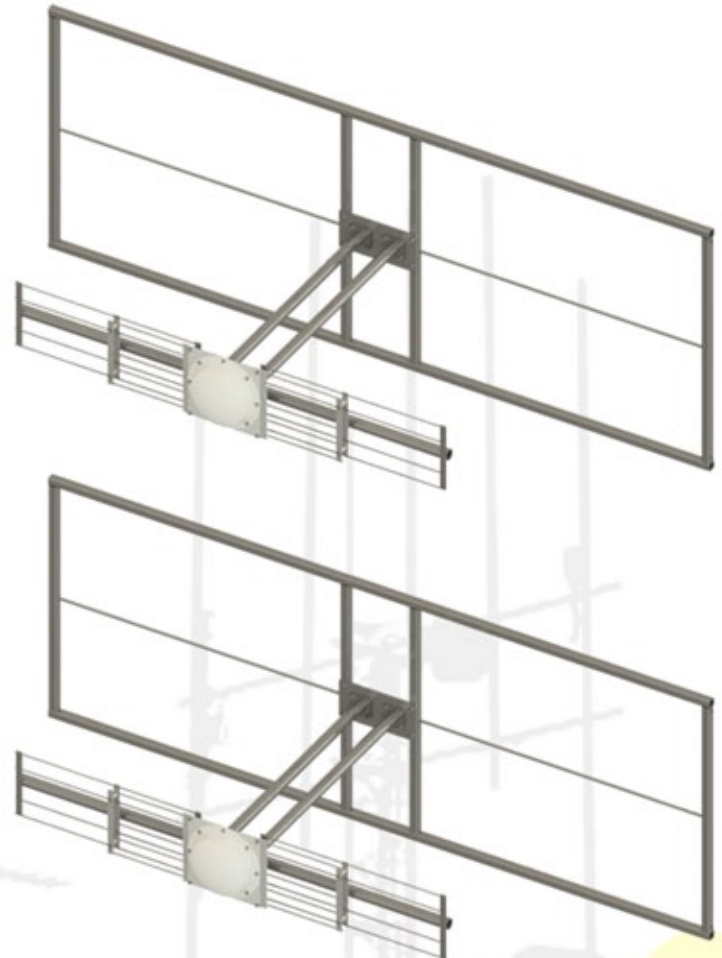
Bandwidth: Single Channel

System arrays up to 2 adjacent channels

Pattern: Directional to 4- around omni directional

Element Input: (2x) 7/8 EIA

Power Rating: (2x) 3kW



Mechanical Specifications

Physical Characteristics: Galvanized steel panel & dipole, brass & copper internals

Mounting: Customizable to available support structure

Vertical Height: 154" - 102" (3912mm - 2591mm) (CH 2 - 6)

Horizontal Width: 120" - 78" (3048mm - 1981mm) (CH 2 - 6)

Length Off Tower: 50" - 35" (1270mm - 889mm) (CH 2 - 6)

Weight: 325 lbs (147 kg)

Wind Area: 29.8 ft² (.277 m²)

PSILVDP antenna model is an optimized frequency-tuned, horizontally polarized antenna intended for Low Band VHF broadcast applications up to 6 kW of input power. Hot dip galvanized construction makes it suitable for any environment.

This model is also available in multi bays for increased gain. Azimuth patterns are dependent upon available support structure. Consult factory for optimum pattern requirements. The PSILVDP includes power divider network, corresponding cables, and site specific mounting. Total weight, wind area, gain, and power rating are dependent on pattern requirements and configuration.

The PSILVDP is available in pressurized or non-pressurized configurations and includes fiberglass feedpoint radome.

PSI reserves the right to modify the indicated technical specifications at any time without notice.

© 2026 Propagation Systems, Inc. 719 Pensacola Road, Ebensburg, PA 15931 USA
phone: +1-814-472-5540 fax: +1-814-472-5676 email: sales@psibroadcast.com web: www.psibroadcast.com