



reliable, durable, customizable, affordable

[ broadcast antenna systems ]

# MODEL PSIFML-HR

## LOW POWER HELICAL FM ANTENNA

LOW COST | RADOME ENCLOSED | FACTORY TUNED | NO PRESSURIZATION REQUIRED

### General Specifications

**Element Input:** "A" - 'N' Female | "B" - 7/8" EIA | "C" - 7-16 DIN

**Power Divider Input:** "A" - 7/8" EIA | "B" - 1-5/8" EIA | "C" - 1-5/8" EIA

**Polarization:** Circular

**Physical Characteristics:** Copper, Brass, Galvanized Steel

**Power Rating:** Up to 4.5 kW

**Multi-Element Arrays:** Up to 6 bays

**Frequency Range:** 88-108 MHz

**Custom Bay Spacing:** Any Between 1/2 and Fullwave

**VSWR:** < 1.15:1 ±200 kHz

**Impedance:** 50 ohms

**Wind Survival Rating:** 124 mph (200 km/h)

**Options:** Directional Pattern Certification

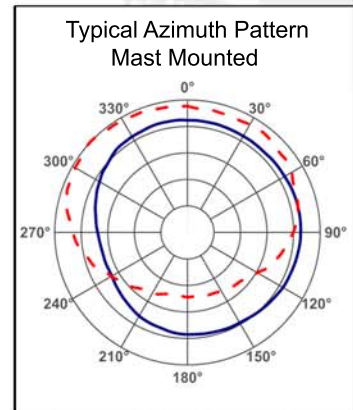


PSIFML-HR antenna model is an omnidirectional, circularly polarized antenna, intended for the low power broadcaster. Marine Grade copper and brass construction and hot dip galvanized steel brackets make it suitable for any environment. Three input versions are available: "A" - 'N' Female, "B" - 7/8" EIA and "C" - 7-16 DIN.

The antenna is available in a single bay or in arrays of up to 6 bays. For multi-element arrays, each version includes a power divider and cable to accommodate the increased power. Version "A" includes 7/8" EIA power divider and LMR400 coaxial cable, "B" and "C" versions include 1-5/8" EIA power divider and 1/2" corrugated foam cable. Bay spacing can be adjusted to any value between 1/2 and full wave for reduced downward radiation.

Standard with the PSIFML-HR is an integral mounting bracket that will accommodate a mast from 1-1/2" to 4" in diameter. Each antenna is fully assembled and the return loss is optimized prior to shipping.

Optional features available are Directional Pattern Certification



FM BROADCAST ANTENNAS