



reliable, durable, customizable, affordable

[broadcast antenna systems]

General Specifications

Input Size: 3-1/8" EIA | 6-1/8" EIA

Input Style: End Fed | Center Fed

Polarization: Circular

Physical Characteristics: Copper, Brass, Galvanized Steel

Power Rating: Up to 40 kW

Multi-Element Arrays: Up to 12 bays

Frequency Range: 88-108 MHz

Custom Bay Spacing: Available

VSWR: < 1.1:1 ±200 kHz

Impedance: 50 ohms

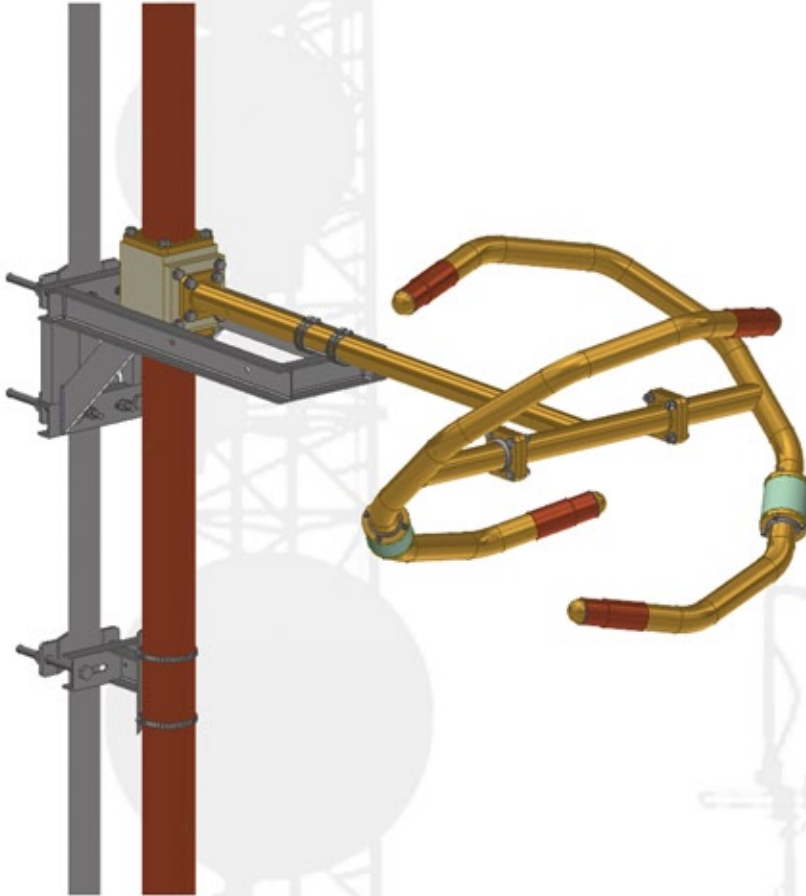
Fine Matcher: Included with 2 or more bays

Options: Directional Pattern Certification | Radomes
Beam Tilt | Null Fill | Optimization | Multi-station
Extreme Weather Package

MODEL PSIFMRH

HIGH POWER FM ANTENNA

FACTORY TUNED | FULLY PRESSURIZED INCLUDING FEED



The FMRH series is an omni directional, circularly polarized antenna which offers you exceptional quality at a competitive price.

Rugged copper and corrosion-resistant brass construction ensure good conductivity and longevity in any environment as well as excellent VSWR bandwidth. Each bay is constructed of 1-5/8" diameter heavy wall brass and is fed from a 1-5/8" diameter support boom. The elements are stacked in arrays of up to 12-bays for increased gain. For arrays requiring beam tilt and/or null fill, a center feed system is required. The FMRH series utilizes rigid 3-1/8" inter-bay transmission lines to connect each element to achieve a high power rating with the lower weight and windload characteristics of the FMR radiating element. The entire antenna system including the feed is pressurized.

Each antenna is normally supplied with standard galvanized mounting brackets for round leg mounting on uniform cross section towers. Custom mounting brackets are also available.

PSI reserves the right to modify the indicated technical specifications at any time without notice.