



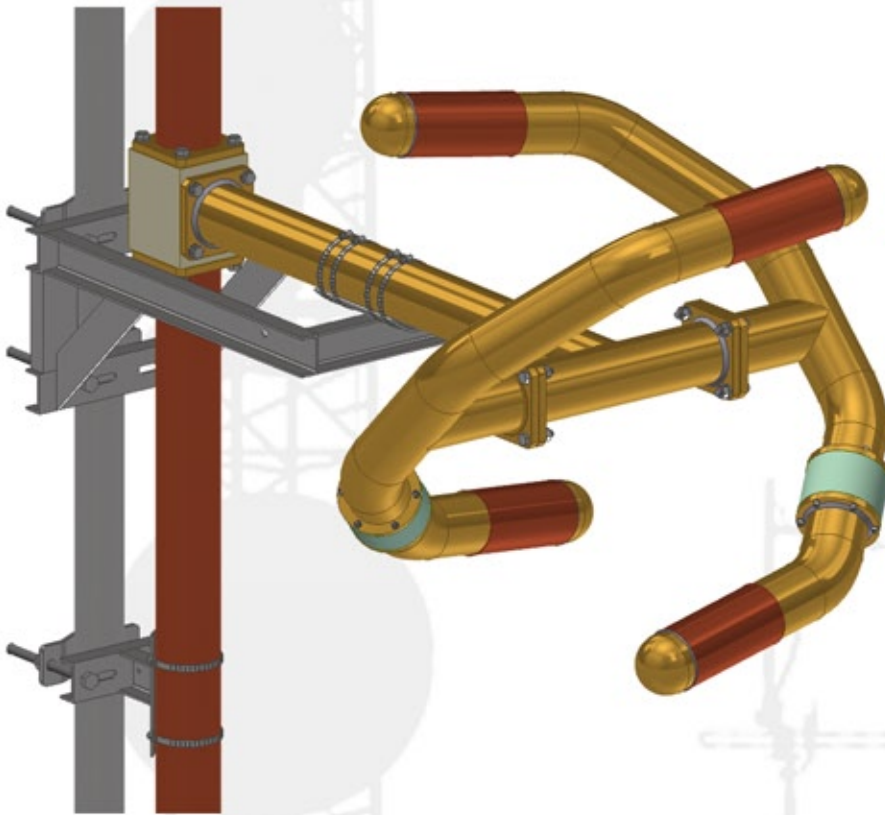
reliable, durable, customizable, affordable

[ broadcast antenna systems ]

# MODEL PSIFHR

## HIGH POWER FM ANTENNA

FACTORY TUNED | FULLY PRESSURIZED INCLUDING FEED



### General Specifications

**Input Size:** 3-1/8" EIA | 6-1/8" EIA

**Input Style:** End Fed | Center Fed

**Polarization:** Circular

**Physical Characteristics:** Copper, Brass, Galvanized Steel

**Power Rating:** Up to 60 kW

**Multi-Element Arrays:** Up to 12 bays

**Frequency Range:** 88-108 MHz

**Custom Bay Spacing:** Available

**VSWR:** < 1.1:1 ±200 kHz

**Impedance:** 50 ohms

**Fine Matcher:** Included with 2 or more bays

**Options:** Directional Pattern Certification | Radomes | Beam Tilt | Null Fill | Optimization | Multi-station

The FHR series is an omni directional, circularly polarized antenna which offers you exceptional quality at a competitive price.

Rugged copper and corrosion-resistant brass construction ensure good conductivity and longevity in any environment as well as excellent VSWR bandwidth. Each bay is constructed of 3" diameter heavy wall brass and is fed from a 3" diameter support boom. The elements are stacked in arrays of up to 12-bays for increased gain. For arrays requiring beam tilt and/or null fill, a center feed system is required. The FHR series utilizes rigid 3-1/8" or 4-1/16" inter-bay transmission lines to connect each element. The entire antenna system including the feed is pressurized.

Each antenna is normally supplied with standard galvanized mounting brackets for round leg mounting on uniform cross section towers. Custom mounting brackets are also available.

PSI reserves the right to modify the indicated technical specifications at any time without notice.