



reliable, durable, customizable, affordable

[broadcast antenna systems]

General Specifications

Input Size: 3-1/8" EIA | 6-1/8" EIA

Input Style: End Fed | Center Fed

Polarization: Circular

Physical Characteristics: Copper, Brass, Galvanized Steel

Power Rating: Up to 40 kW

Multi-Element Arrays: Up to 12 bays

Frequency Range: 88-108 MHz

VSWR: < 1.1:1 ±200 kHz

Impedance: 50 ohms

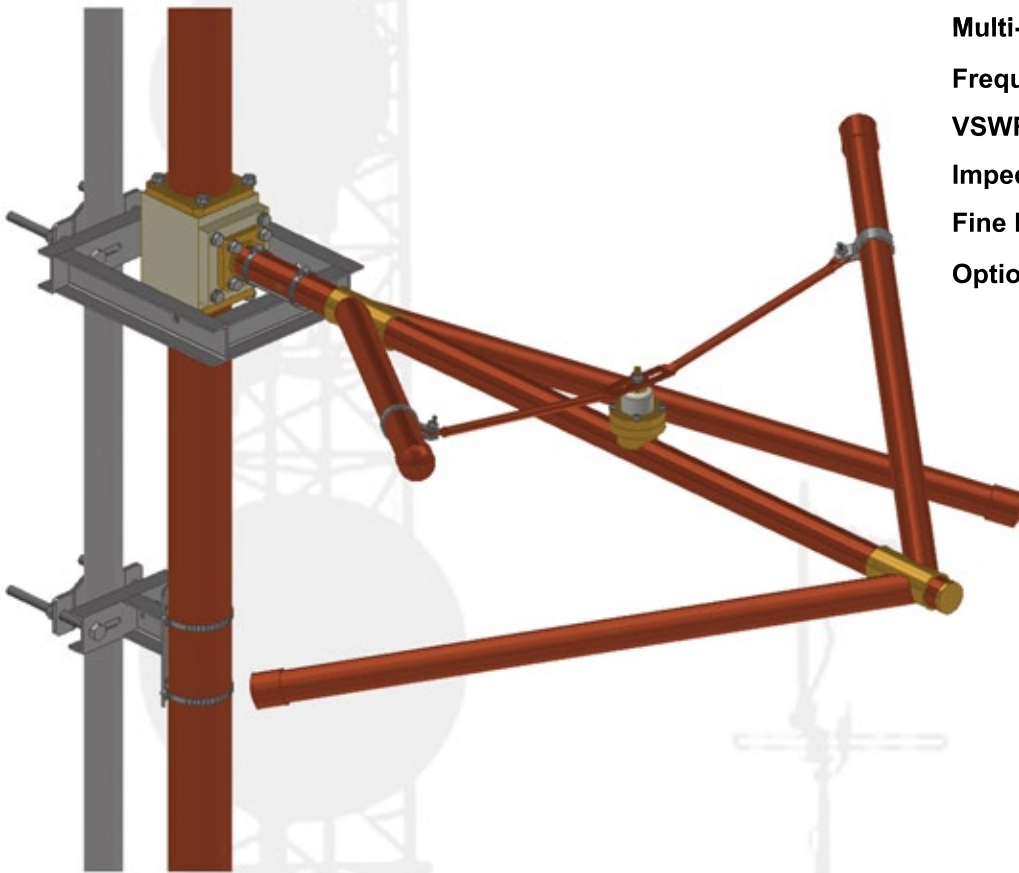
Fine Matcher: Included with 2 or more bays

Options: Directional Pattern Certification
Beam Tilt | Null Fill

MODEL PSIFH

HIGH POWER FM ANTENNA

FACTORY TUNED | FULLY PRESSURIZED TO FEEDPOINT



PSIFH antenna model consists of two shunt fed dipole elements in a slant V configuration forming a circularly polarized radiator. The elements are stacked vertically in arrays of up to 12-bays for increased gain. For arrays requiring beam tilt and/or null fill, a center feed systems is required. This antenna is available with breakdown elements to allow the dipole elements to be disassembled from the support boom. This reduces crating and shipping costs.

The FH series antenna uses 3-1/8" inter-bay transmission lines to connect each element. The entire antenna system is pressurized through the rigid inter-bay line to the feedpoint of each radiator. For areas where icing conditions are frequency or severe, electrical deicers are available. Standard hot dip galvanized steel brackets that accommodate a mast from 1-1/2" to 4" in diameter are included with every antenna. Custom bracket for non uniform towers are available at an additional cost.

PSI reserves the right to modify the indicated technical specifications at any time without notice.